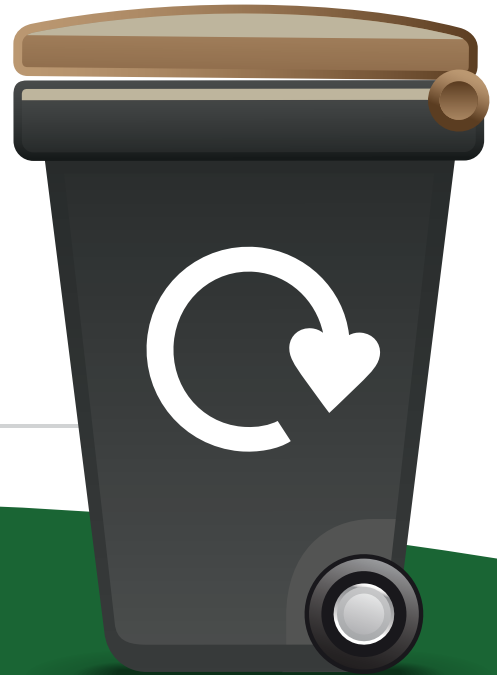


Your guide to Recycling Right



A full
comprehensive
list of what you
can and cannot
recycle

 Nuneaton and
Bedworth recycles

Nuneaton
&
Bedworth 
United to Achieve

www.nuneatonandbedworth.gov.uk/recycling
024 7637 6170

Follow us: @NBBCouncil



Introduction

The Household Recycling Service

All householders in the Borough are provided with a brown lidded bin for recyclable materials.

Your recycling is collected fortnightly – **you can download your collection calendar from the councils website.**

www.nuneatonandbedworth.gov.uk

: Index

: P3 - 4	Paper and card
: P5 - 6	Metals and aerosols
: P6 - 9	Plastics
:	Pots, tubs and trays
:	Bags and film
:	Hard plastics
: P10 - 11	Glass, tetrapak and textiles

Recycling Right

- We understand that recycling can sometimes seem confusing, and so this clear and handy guide has been created to help make recycling as easy as possible.
- Materials have been categorised for ease of use.
- Please keep this guide handy so if you are unsure, it can be referred to at any time.
- It's important the correct materials are put out for recycling.
- We collect your recycling in your brown lid bin.
- All your recyclable materials are taken to a material recycling facility (MRF) The MRF receives co-mingled recycling collected from homes and uses a combination of specialist waste separation equipment and the latest AI technology to separate the materials into single material streams.
- If unrecyclable materials are put out for recycling, this can contaminate a lot of other recycling materials during the process; leading to lower overall recycling, using additional energy during the process and creating additional costs.

It's in everyone's best interests that we recycle as much as we can and recycle the right things!

PAPER - YES



Paper/Newspapers

ACCEPTED:
This can be placed
into your
**BROWN LID
BIN**



Envelopes

ACCEPTED:
This can be placed
into your
**BROWN LID
BIN**



Magazines and
catalogues

ACCEPTED:
This can be placed
into your
**BROWN LID
BIN**



Junk mail

ACCEPTED:
This can be placed
into your
**BROWN LID
BIN**



CARD - YES



Phone books

ACCEPTED:
This can be placed
into your
**BROWN LID
BIN**



Brown paper and tubes

ACCEPTED:
This can be placed
into your
**BROWN LID
BIN**



Egg boxes

ACCEPTED:
This can be placed
into your
**BROWN LID
BIN**



Cardboard (inc corrugated)
without plastic contaminants

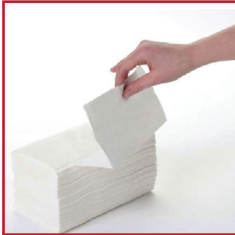
ACCEPTED:
This can be placed
into your **BROWN LID BIN**
**without plastic
contaminants**



BROWN LID BIN

Nuneaton and
Bedworth recycles

PAPER - NO



Tissues

NOT ACCEPTED



Foil, glittery gift wrap
and cards

NOT ACCEPTED



Wallpaper and
decoration paper

NOT ACCEPTED



Hygiene/sanitary
products (nappies, wipes)

NOT ACCEPTED



CARD - NO



Used paper towels

NOT ACCEPTED



Takeaway Pizza Boxes

NOT ACCEPTED



Takeaway cups, trays
and boxes

NOT ACCEPTED



Paperback books and
Greetings Cards

NOT ACCEPTED



METALS & AEROSOLS - YES



Food tins / drink cans

ACCEPTED: (if rinsed)
This can be placed
into your
**BROWN LID
BIN**



Metal food tubes
(tomato puree)

**ACCEPTED:
(fully empty)**
This can be placed
into your
**BROWN LID
BIN**



Jar lids

**ACCEPTED:
(metal only)**
This can be placed
into your
**BROWN LID
BIN**



Spirty cream

ACCEPTED:
This can be placed
into your
**BROWN LID
BIN**



METALS & AEROSOLS - YES



Deodorant

ACCEPTED:
This can be placed
into your
**BROWN LID
BIN**



Hair spray/mousse
bottles

ACCEPTED:
This can be placed
into your
**BROWN LID
BIN**



Cleaning products (i.e.
polish) and air fresheners

**ACCEPTED:
(fully dispensed)**
This can be placed
into your
**BROWN LID
BIN**



Aluminium foil, trays, tins
and dishes

ACCEPTED: (if rinsed)
This can be placed
into your
**BROWN LID
BIN**



BROWN LID BIN

Nuneaton and
Bedworth recycles

METALS & AEROSOLS - NO



Metal containers for chemicals (paint, white spirits, engine oils)

NOT ACCEPTED



METALS & AEROSOLS - NO



General kitchen ware (i.e. cutlery, pots and pans)

NOT ACCEPTED



Aerosol paints

NOT ACCEPTED



All plastic bottles except black – drinks and water bottles

ACCEPTED: (if rinsed)

This can be placed into your **BROWN LID BIN**



Laminated foil (pet food pouches)

NOT ACCEPTED



PLASTICS - YES



Milk bottles

ACCEPTED:

This can be placed into your **BROWN LID BIN**



Kettles, irons, pipes, white goods (please take to Judkins)

NOT ACCEPTED



Detergent and soap bottles, household cleaning bottles

ACCEPTED: (if rinsed)

This can be placed into your **BROWN LID BIN**



BROWN LID BIN

PLASTICS - YES



Skin care bottles

ACCEPTED: (if rinsed)
This can be placed
into your
BROWN LID BIN



Shampoo and shower gel
bottles

ACCEPTED: (if rinsed)
This can be placed
into your
BROWN LID BIN



Ready-to-use plant food
and pesticide bottles

ACCEPTED: (if rinsed)
This can be placed
into your
BROWN LID BIN



Toothpaste tubes

ACCEPTED: (if rinsed)
This can be placed
into your
BROWN LID BIN



PLASTICS - YES



Roll-on deodorant bottles

ACCEPTED:
This can be placed
into your
BROWN LID BIN



POTS, TUBS AND TRAYS - YES



Pots (yoghurt, soup, etc.)

ACCEPTED: (if rinsed)
This can be placed
into your
BROWN LID BIN



Tubs (margarine, ice
cream etc.)

ACCEPTED: (if rinsed)
This can be placed
into your
BROWN LID BIN



Food trays, long trays,
sandwich box, egg boxes

ACCEPTED:
This can be placed
into your
BROWN LID BIN



BROWN LID BIN

Nuneaton and
Bedworth recycles

POTS, TUBS AND TRAYS - YES



Fruit / Mushroom punnets

ACCEPTED:
This can be placed
into your
BROWN LID BIN



Chocolate, sweet and
biscuit tubs and trays

ACCEPTED:
This can be placed
into your
BROWN LID BIN



Non-black plant pots

ACCEPTED



Microwavable tubs and
trays (take-away and
tupperware)

ACCEPTED



POTS, TUBS AND TRAYS - NO



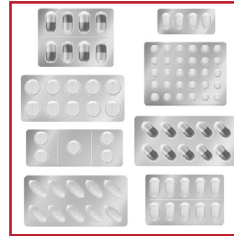
Laminated pouches

NOT ACCEPTED



Paint pots

NOT ACCEPTED



Medicine/tablet packs

NOT ACCEPTED



Polystyrene

NOT ACCEPTED



BROWN LID BIN

BAGS AND FILM - YES



Food/drink pouches and
crisp packets

ACCEPTED



Coat hangers

NOT ACCEPTED



HARD PLASTICS - NO



Plastic toys

NOT ACCEPTED



HARD PLASTIC - NO



Garden furniture

NOT ACCEPTED



Remote controls

NOT ACCEPTED



CD/DVD cases

NOT ACCEPTED



Toilet seats

NOT ACCEPTED



BROWN LID BIN

Nuneaton and
Bedworth recycles

GLASS - YES



Drinks/oil bottles

ACCEPTED: (if rinsed)
This can be placed
into your
BROWN LID BIN



Food, drink and
condiment jars

ACCEPTED: (if rinsed)
This can be placed
into your
BROWN LID BIN



Glass cosmetic containers

ACCEPTED: (if rinsed)
This can be placed
into your
BROWN LID BIN



Perfume, aftershave and
face cream bottles

ACCEPTED:
This can be placed
into your
BROWN LID BIN

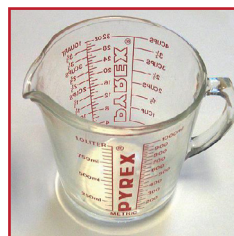


GLASS - NO



Drinking glasses

NOT ACCEPTED



Glass cookware/pyrex

NOT ACCEPTED



Vases and ceramics

NOT ACCEPTED



Nail varnish bottles

NOT ACCEPTED



BROWN LID BIN

GLASS - NO



Light bulbs and tubes

NOT ACCEPTED



TETRAPAK - YES



Frozen yoghurt/lolly tetrapak

ACCEPTED:

This can be placed
into your
**BROWN LID
BIN**



Mirrors

NOT ACCEPTED



TETRAPAK - NO



Crisp cans

NOT ACCEPTED



TETRAPAK - YES



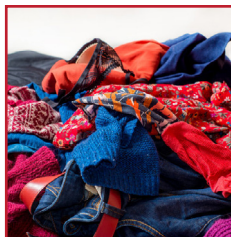
Milk and juice containers

ACCEPTED:

This can be placed
into your
BROWN LID BIN



TEXTILES - NO



Textiles

NOT ACCEPTED



Sauce cartons

ACCEPTED: (if rinsed)

This can be placed
into your
**BROWN LID
BIN**



Find out where to recycle textiles at -
www.recyclenow.com/recycling-locator



Frequently asked questions

Do things have to be rinsed before recycling?

Yes, please rinse your recycling. Food waste or liquids contaminate the materials and makes the recycling process harder.

What if all my recycling will not fit into my brown-lid bin?

Additional cardboard must be small enough to fit inside an empty brown-lid bin with the lid closed to enable the crews to place it in the emptied bin and load onto the vehicle.

When is my collection day?

Your collection calendar can be found at www.nuneatonandbedworth.gov.uk or contact the Recycling Hotline on **024 7637 6170**.

Can I have an additional recycling bin?

For more information about extra bins contact **024 7637 6170**.

For more information on assisted collections, Bulky Collection Service, Clinical Waste Collections, community litter picks, the Environment Team and the Recycling team can be found at www.nuneatonandbedworth.gov.uk

How do I dispose of old vapes/lithium batteries?

Never put vapes, batteries or electricals in any of your kerbside bins. Any store that sells vapes or batteries should offer an in-store recycling container.

Alternatively, these can be recycled at Judkins HWRC

For information on home composting visit -

www.warwickshire.gov.uk/composting