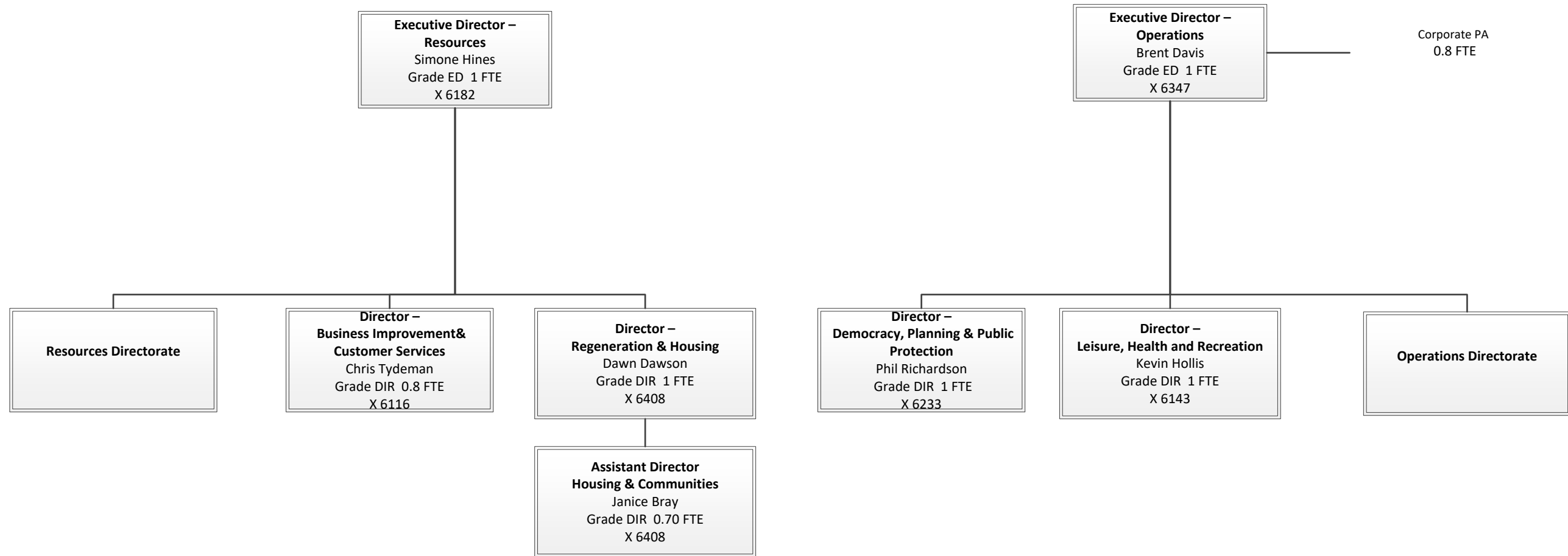


**Nuneaton and Bedworth Borough Council**

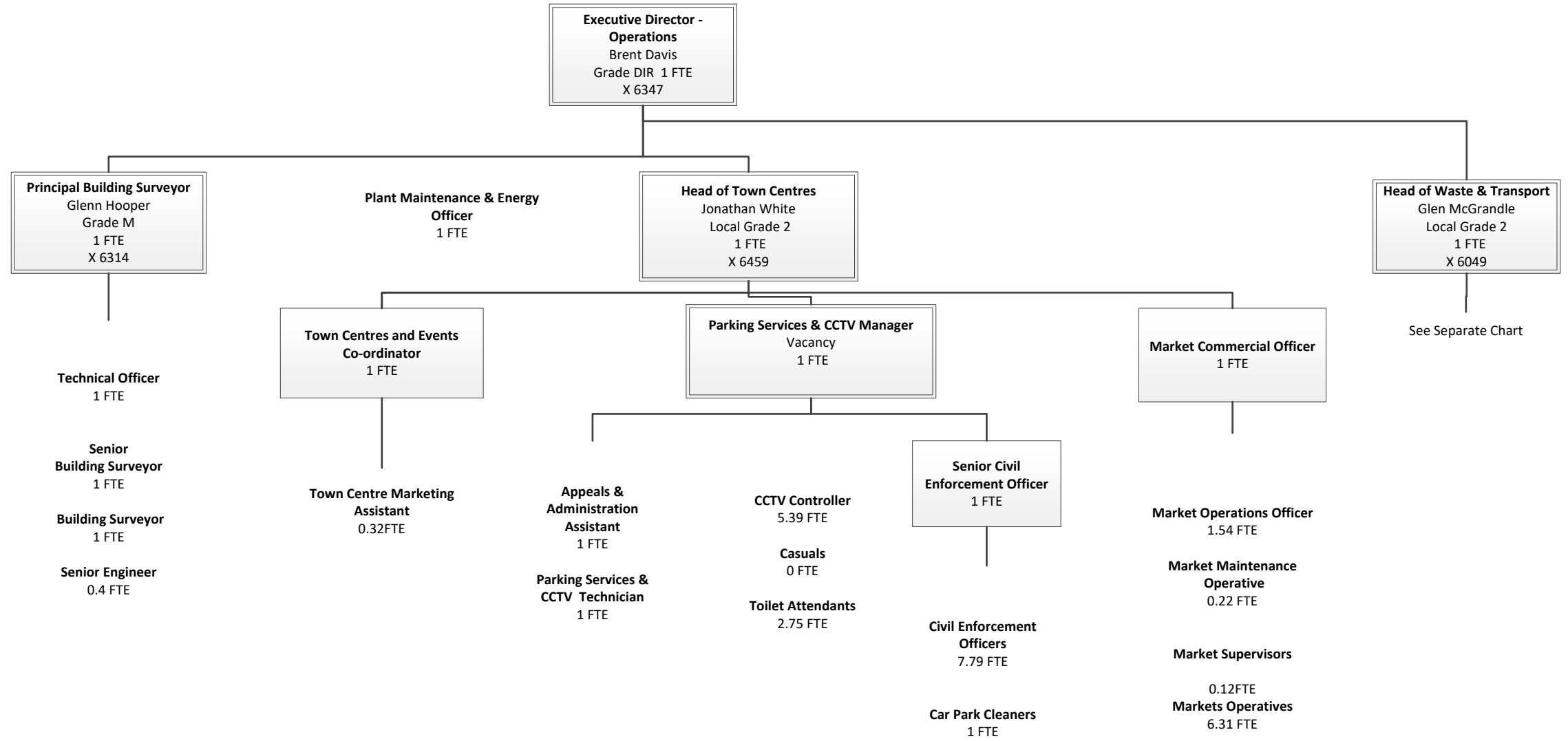
**Organisation Chart**

**October 2020**

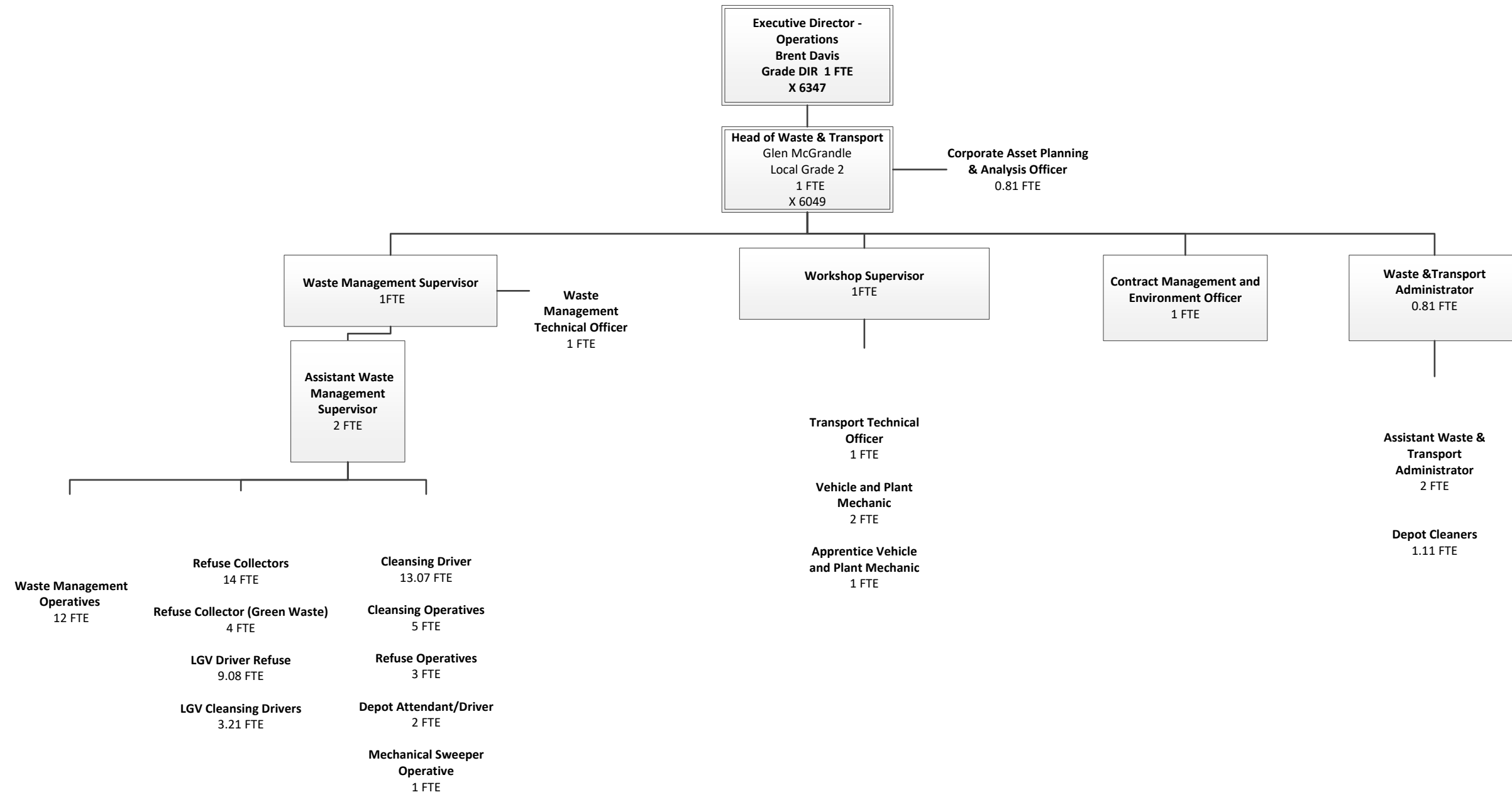
# Management Team



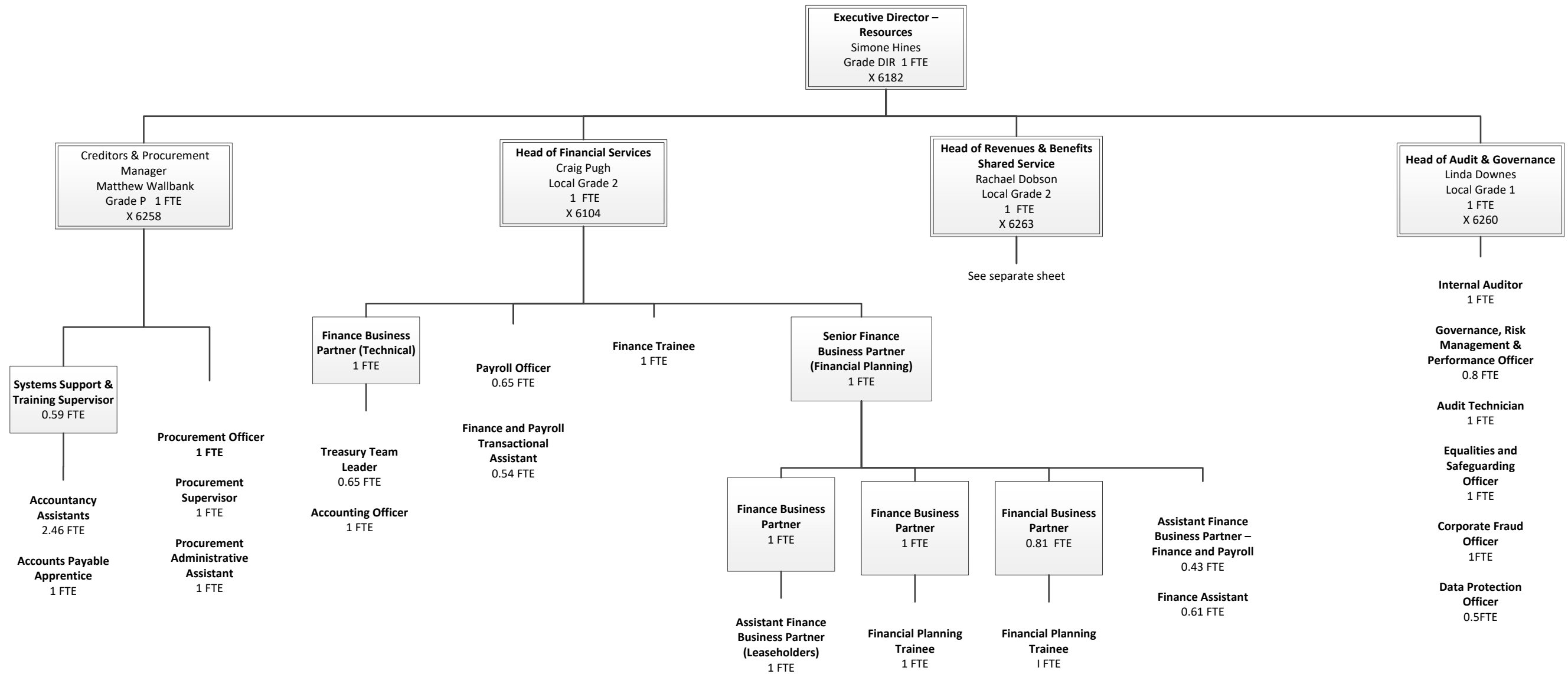
# Operations 1/2



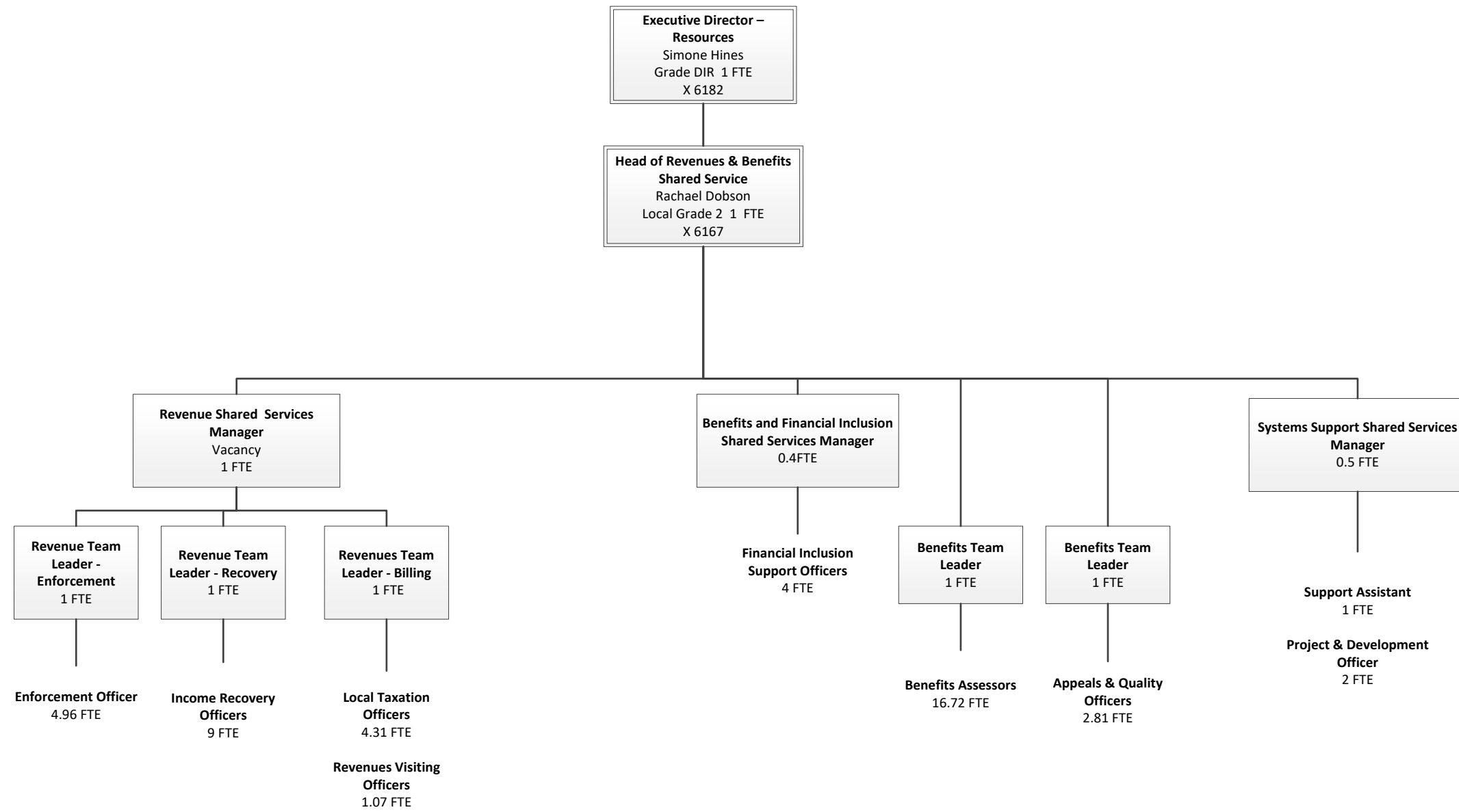
# Operations 2/2



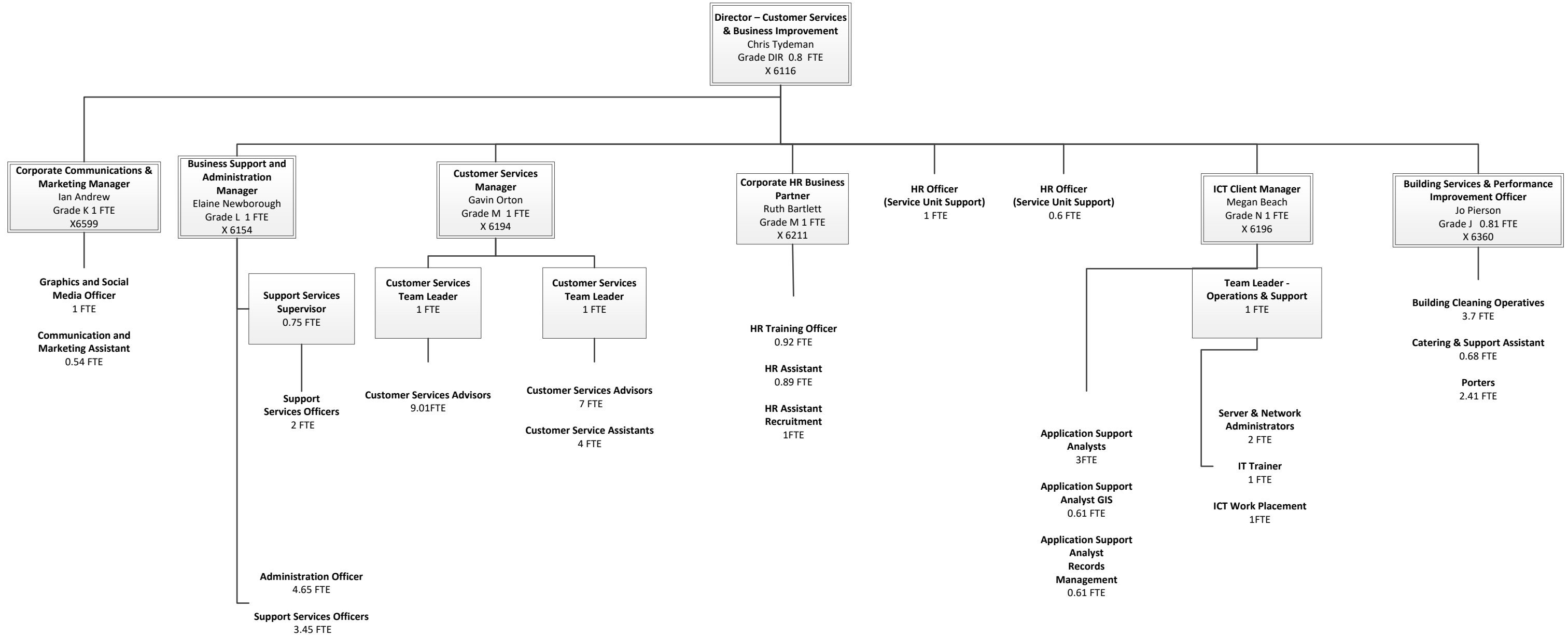
# Resources 1/2



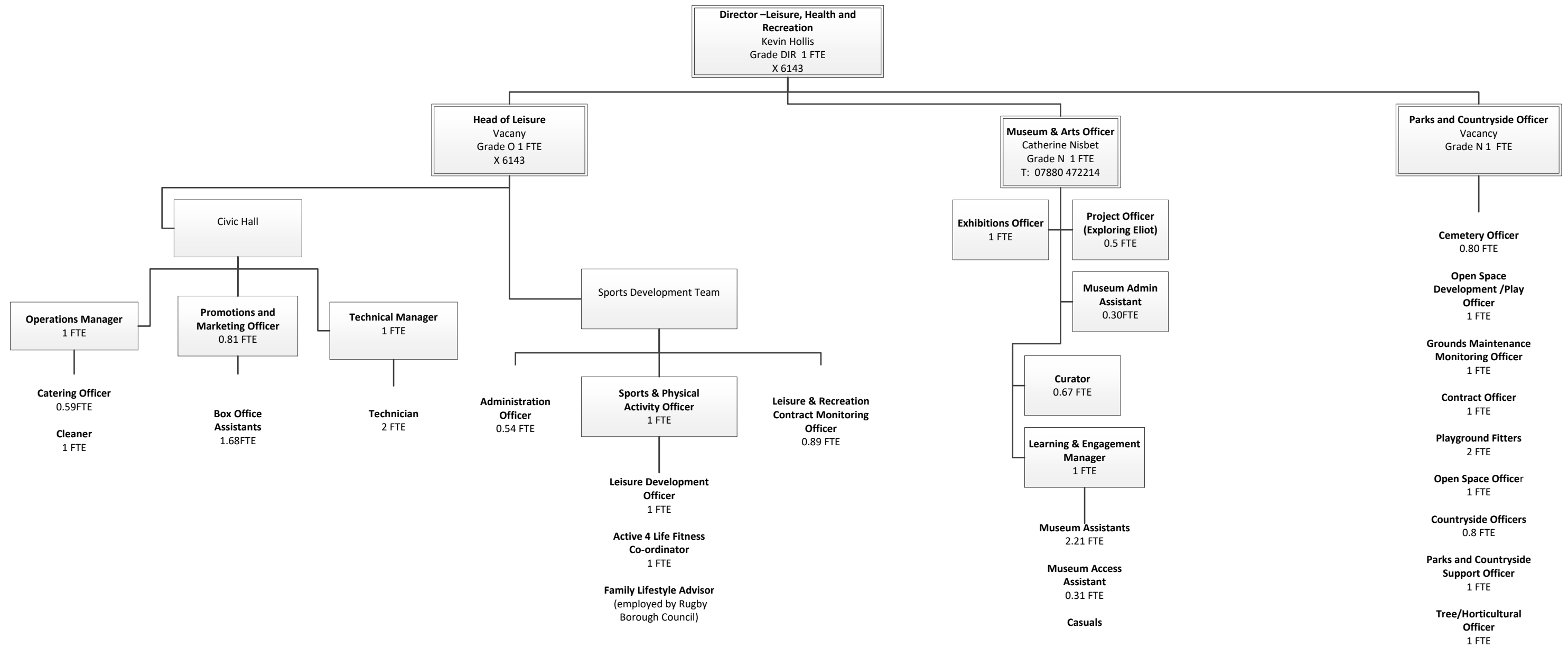
# Resources 2/2



# Customer Services & Business Improvement

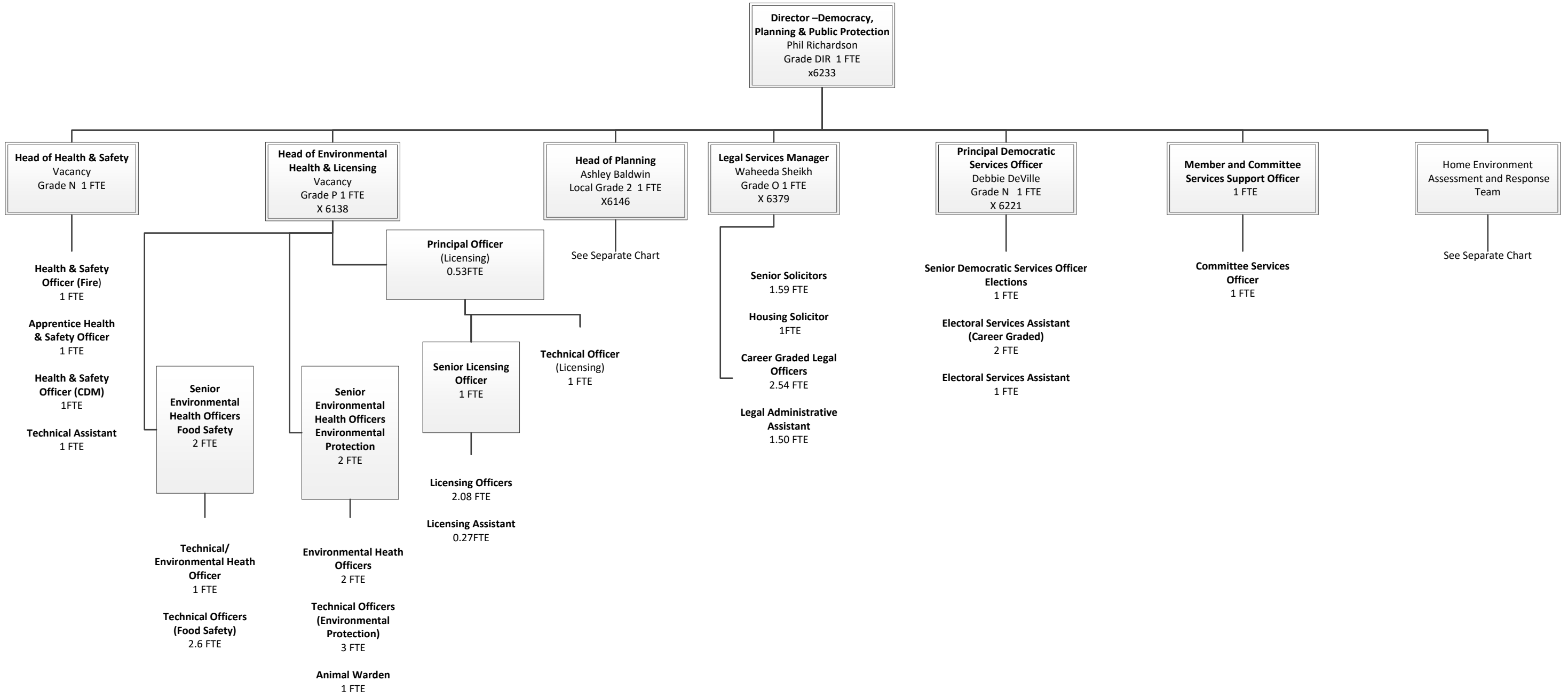


# Leisure, Recreation and Health

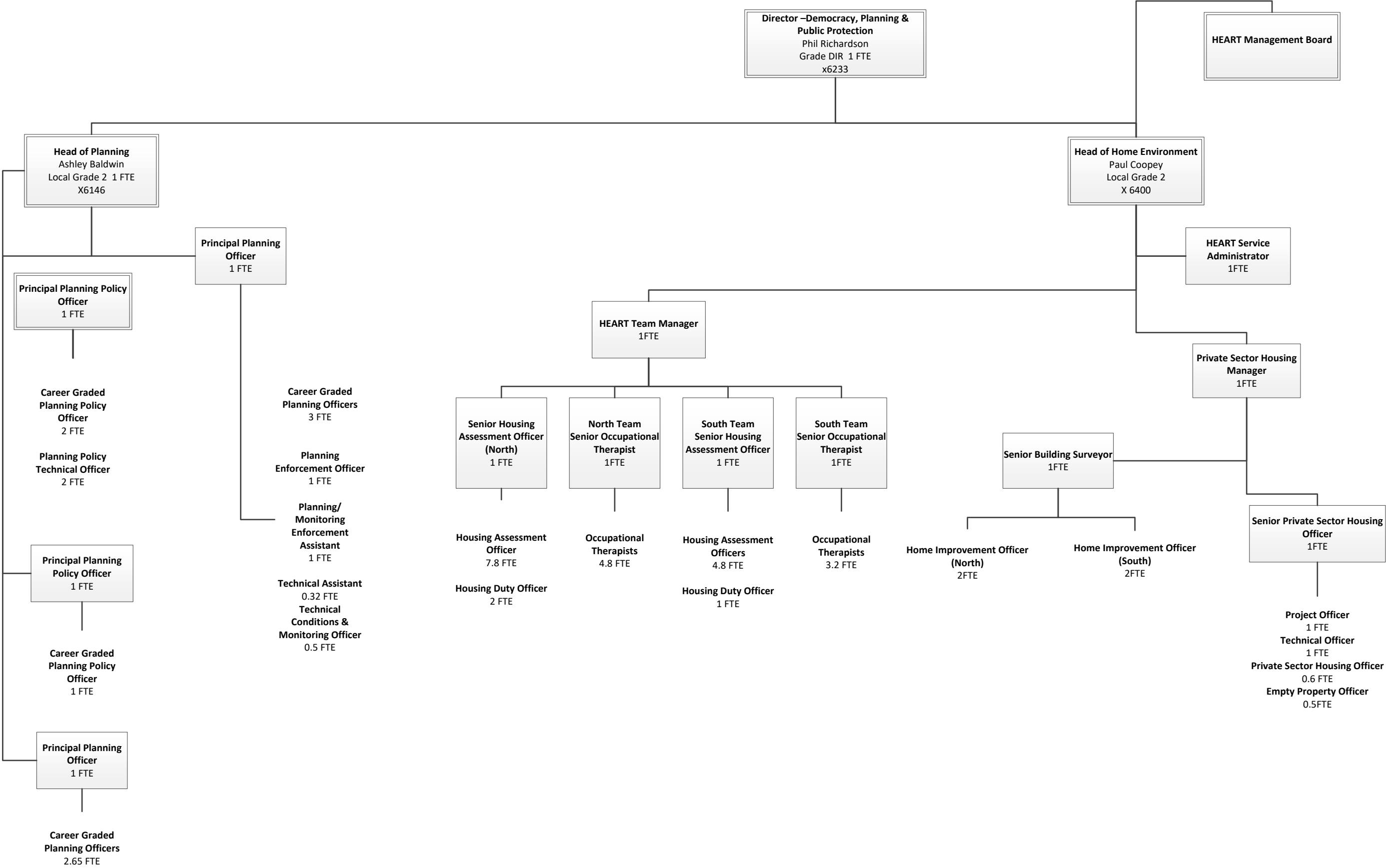




# Democracy, Planning and Public Protection 1/2



# Democracy, Planning and Public Protection 2/2





# Regeneration and Housing 1/3

**Director –Regeneration and Housing**  
Dawn Dawson  
Grade DIR 1 FTE  
X 6408

**Assistant Director Housing & Communities**  
Janice Bray  
Grade DIR 0.70 FTE  
X 6408

**Head of Estates & Emergency Planning**  
Les Snowden  
Local Grade 2 1 FTE  
X 6249

**Economic Development Manager**  
1 FTE

**Strategic Housing Services Manager**  
Jane Grant  
Grade P 1 FTE  
X 6483

**Business Performance Officer**  
1 FTE

**Head of Housing Property Services**  
Rob Askew  
Local Grade 1 1 FTE  
X 6015

**Transforming Nuneaton Project Officer**  
1FTE

**Head of Housing and Communities**  
Nicola Topping  
Local Grade 1  
1 FTE  
X 6523

**Principal Land and Property Officer – Property and Valuation**  
1FTE  
  
**Land and Property Officer**  
1 FTE  
  
**Estates Technician**  
0.81 FTE

**Economic Development Assistant**  
1 FTE

**Housing Solutions Manager**  
1 FTE

**Housing Research and Strategy Officer**  
1 FTE

**Housing Solutions Team leader**  
1FTE

**Landlord Liaison & Development Officer**  
1 FTE

**Housing Solutions Officers**  
6 FTE

**Choice Based Lettings Officers**  
2.5 FTE

**Housing Solutions Officer Temporary Accommodation Officer**  
1 FTE

See Separate Chart

**Communities Manager**  
1 FTE

**Landlord Services Team Leader**  
1 FTE

**Estates Team Leader**  
1 FTE

**Communities Officer (ASB & Partnerships)**  
1 FTE

**Business Support Manager**  
1 FTE

**Independent Living Co-ordinator**  
1FTE

**Introductory Tenancy Housing Officer**  
1 FTE

**Estates Caretaker**  
7 FTE

**Communities Officers Engagement & Development**  
1 FTE

**Business Support Officers**  
3.88 FTE

Cleaners

Independent Living Assistant

**Housing Officers**  
6 FTE

**Estates Maintenance Officer**  
1 FTE

**Community Safety & Development**  
068 FTE

**Business Support Officer - Finance**  
0.49 FTE

Independent Living Officers  
Independent Living Officers(Communal)

**Tenancy Support Officer**  
1FTE

**Cleaner**

**Involvement & Communications Officers**  
1 FTE

**Housing Management Systems Officer**  
1 FTE

Mobile Independent Living Officers

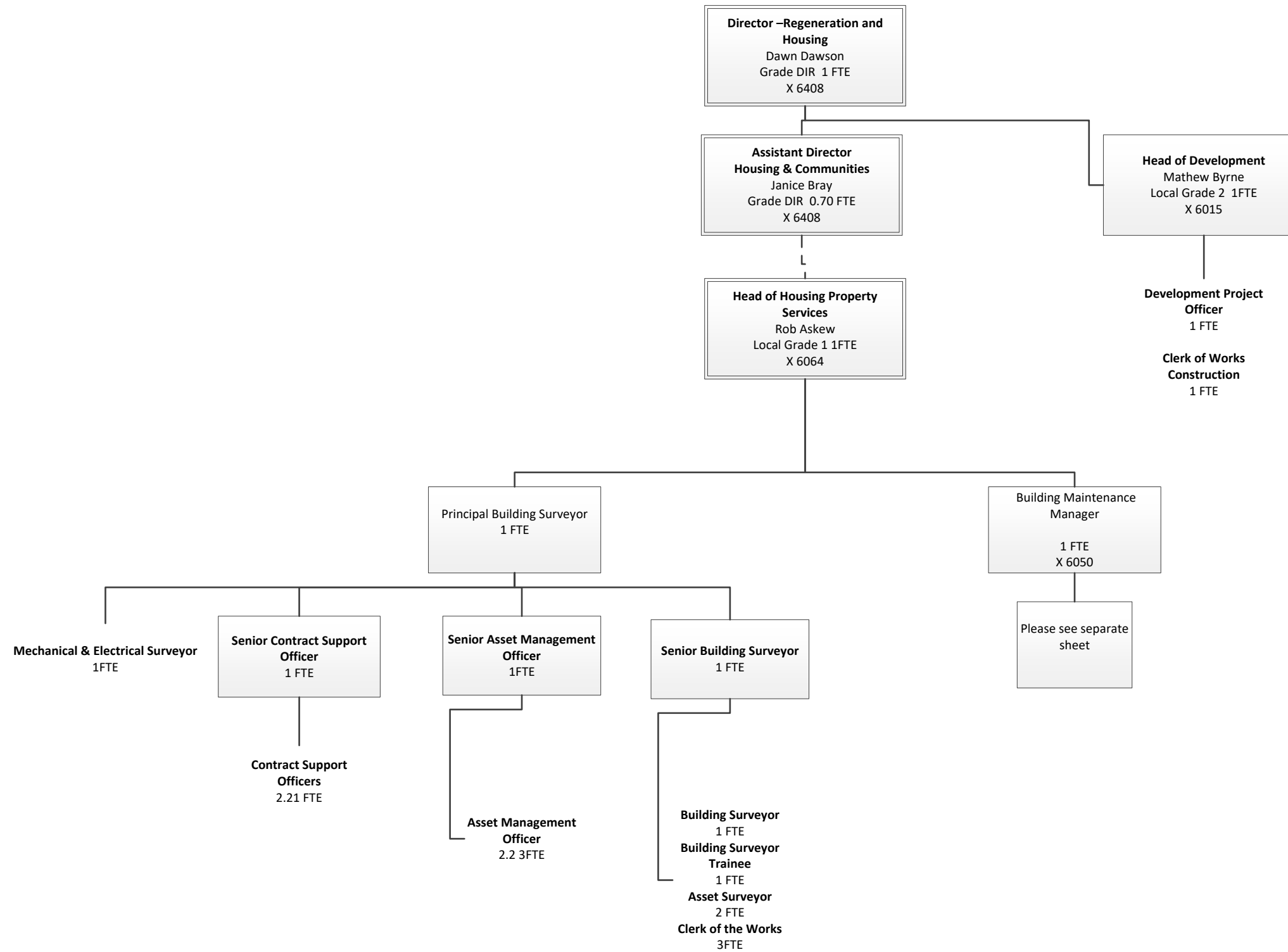
**Customer Liaison Officer**  
1 FTE

**Community Centre Administrator- Keresley**  
1 FTE

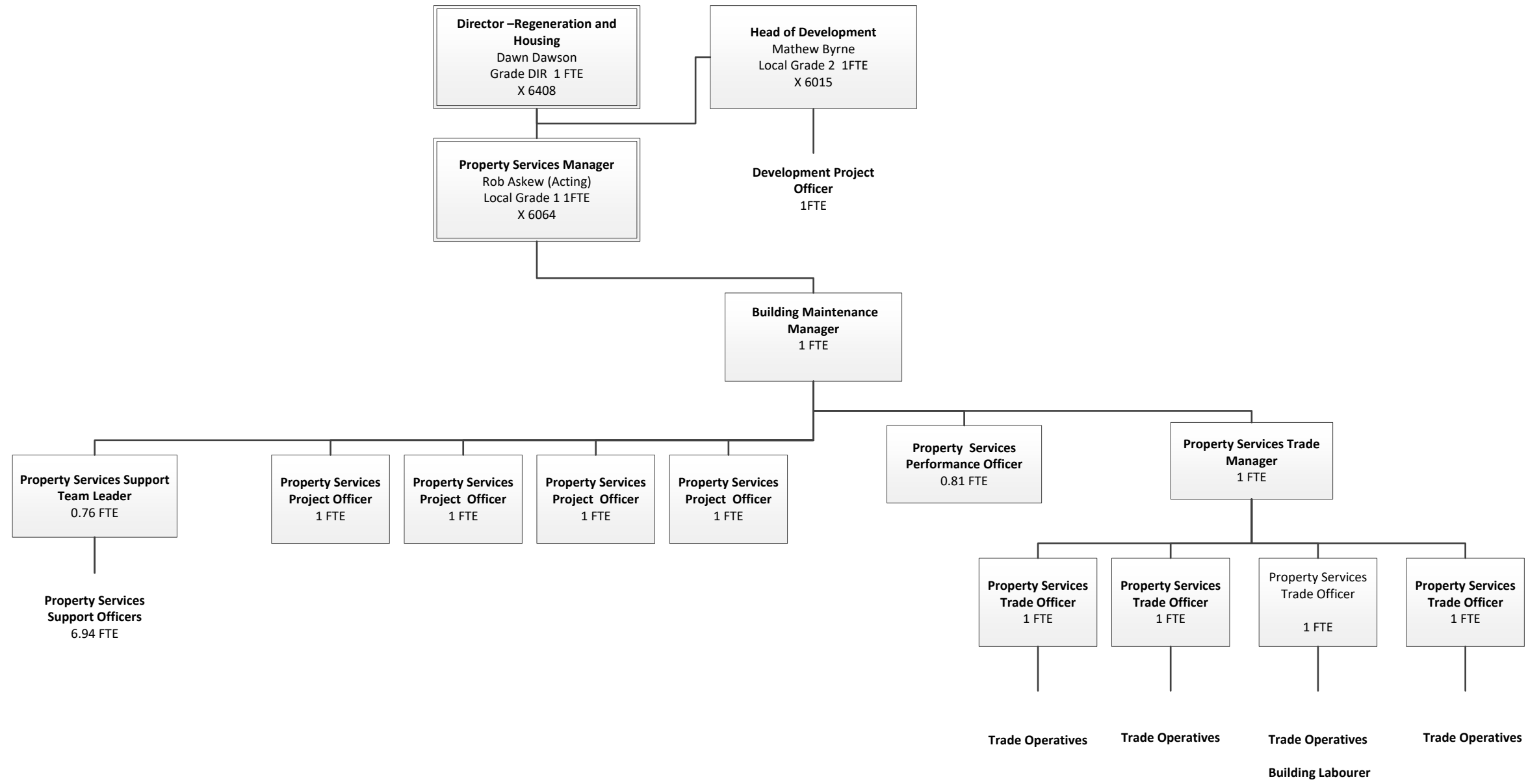
Wellbeing Officers

**Community Centre Administrator – Stockingford**  
0.81 FTE

# Regeneration & Housing 2/3



# Regeneration & Housing 3/3



## Senior Employee Responsibilities

### Executive Director- Operations

Annual Salary: £83232 FTE

Budget held:

Responsibilities:

- Full strategic, operational and managerial responsibility for the Operations Directorate which includes Transport and Waste, Town Centres, and the Corporate Building Surveyors team.
- Work with the Executive Director- Resources and all other Directors to ensure the Council achieves excellence in its services to its customers, both internal and external, via the management team and other relevant bodies.
- Ensure the Council's activities within their area of control are carried out in a lawful manner in adherence to the Council's policies and standing orders, and in accordance with the specific service related functions appropriate to the Directorate.

### Executive Director – Resources

Annual Salary: £83232 FTE

Budget held:

Responsibilities:

- Full strategic, operational and managerial responsibility for the Operations Directorate which includes Transport and Waste, Town Centres, and the Corporate Building Surveyors team.
- Work with the Executive Director- Resources and all other Directors to ensure the Council achieves excellence in its services to its customers, both internal and external, via the management team and other relevant bodies.
- Ensure the Council's activities within their area of control are carried out in a lawful manner in adherence to the Council's policies and standing orders, and in accordance with the specific service related functions appropriate to the Directorate.

### Director – Regeneration & Housing

Annual Salary: £64770-70890 FTE

Budget held:

Responsibilities:

- Full strategic, operational and managerial responsibility for the Regeneration & Housing Directorate which includes the Communities Team, Housing Options and Homelessness Teams, Property Services, Economic Development, Landlord Services and Estates and Land and Property Teams.
- Work with the Executive Directors and all other Directors to ensure the Council achieves excellence in its services to its customers, both internal and external, via the management team and other relevant bodies.
- Ensure the Council's activities within their area of control are carried out in a lawful manner in adherence to the Council's policies and standing orders, and in accordance with the specific service related functions appropriate to the Directorate.

### Director – Business Improvement & Customer Services

Annual Salary: £62854-70249 FTE

Budget held:

Responsibilities:

- Full strategic, operational and managerial responsibility for the Customer Services and Business Improvement Directorate which includes Human Resources, IT, Customer Services, Communications, Building Services, Support Services and Emergency Planning.
- Work with the Executive Directors and all other Directors to ensure the Council achieves excellence in its services to its customers, both internal and external, via the management team and other relevant bodies.
- Ensure the Council's activities within their area of control are carried out in a lawful manner in adherence to the Council's policies and standing orders, and in accordance with the specific service related functions appropriate to the Directorate.

•

### Director – Democracy, Planning & Public Protection

Annual Salary: £64770-7890 FTE (plus allowance for Monitoring Officer duties)

Budget held:

Responsibilities:

- Full strategic, operational and managerial responsibility for the Democracy, Planning & Public Protection Directorate which includes Legal Services, Committee Services, Democratic Services, Planning, Environmental Health, Health and Safety, Private Sector Housing and HEART
- Work with the Executive Directors and all other Directors to ensure the Council achieves excellence in its services to its customers, both internal and external, via the management team and other relevant bodies.
- Ensure the Council's activities within their area of control are carried out in a lawful manner in adherence to the Council's policies and standing orders, and in accordance with the specific service related functions appropriate to the Directorate.

### Director – Leisure, Recreation and Health

Annual Salary: £62854-70249 FTE

Budget held:

Responsibilities:

- Full strategic, operational and managerial responsibility for the Leisure, Recreation and Health Directorate which includes Sports Development, Civic Hall, Museum, Parks and Countryside and Health.
- Work with the Executive Directors and all other Directors to ensure the Council achieves excellence in its services to its customers, both internal and external, via the management team and other relevant bodies.
- Ensure the Council's activities within their area of control are carried out in a lawful manner in adherence to the Council's policies and standing orders, and in accordance with the specific service related functions appropriate to the Directorate