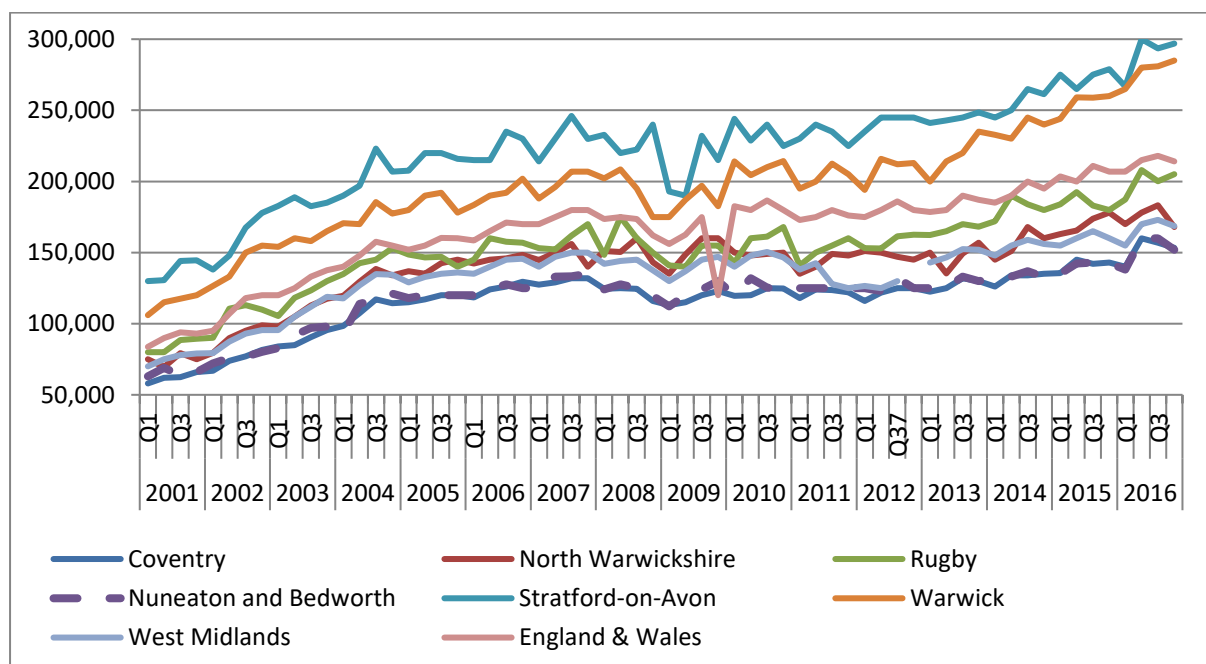


House Price 2016

Median	Q1	Q2	Q3	Q4	Overall
Coventry	140,000	160,000	156,995	153,250	151,000
North Warwickshire	169,975	178,000	183,250	167,975	175,000
Rugby	187,250	207,995	200,200	205,000	199,995
Nuneaton and Bedworth	138,000	160,000	160,000	152,000	150,250
Stratford-on-Avon	266,748	300,000	293,475	297,000	289,000
Warwick	265,000	280,000	281,000	285,000	275,150
West Midlands	155,000	170,000	173,000	168,625	165,000
England & Wales	207,000	215,000	218,000	214,000	212,950

Source: Land Registry

House Price Change 2001-2016



Source: Land Registry

Affordability Ratio 2013-2015

Median

	2013	2014	2015	Average
Coventry	4.40	4.84	5.20	4.81
North Warwickshire	6.38	6.76	7.39	6.84
Rugby	5.62	6.30	6.41	6.11
Nuneaton and Bedworth	5.39	5.63	6.26	5.76
Stratford-on-Avon	8.75	8.76	10.37	9.29
Warwick	7.78	8.92	8.97	8.56
England	6.92	7.25	7.63	7.27

LQ

	2013	2014	2015	Average
Coventry	5.02	5.61	5.84	5.49
North Warwickshire	6.51	6.85	7.06	6.81
Rugby	6.13	6.68	6.68	6.50
Nuneaton and Bedworth	5.45	6.16	6.53	6.05
Stratford-on-Avon	9.15	9.51	10.57	9.74
Warwick	8.08	8.81	9.48	8.79
England	6.66	6.95	7.02	6.87

Source: ONS